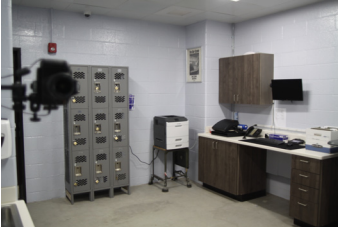


POLICE FACILITY
PLANNING & DESIGN
SERVICES



SILVER/PETRUCELLI+ASSOCIATES
Architects / Engineers / Interior Designers

3190 Whitney Avenue | Hamden CT 06518
203.230.9007 | silverpetrucelli.com
info@silverpetrucelli.com



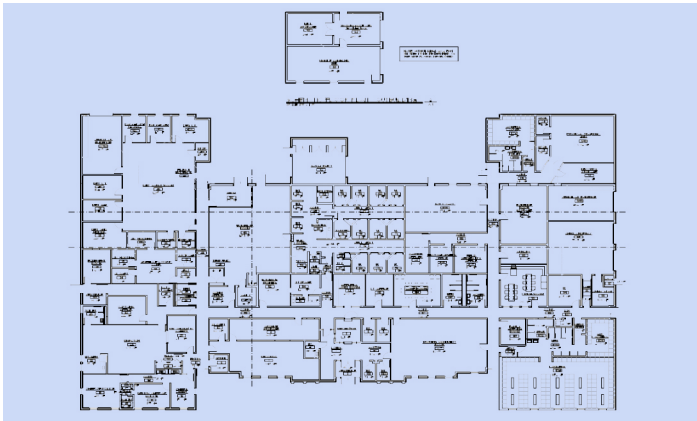
**Public Safety Complex Cell Block
Renovations, Willimantic, CT**
(42 officers; pop. 25,268)

A space needs analysis determined needs for cells, holding areas and interview rooms. Cell separation, ADA accessibility, monitoring equipment and decontamination areas were included in the renovations.



Police Department Space Needs Study, Enfield, CT
(128 officers/staff; pop. 45,000)

A space study, initial conceptual plans and cost estimates were developed for expansion of the department including a new substation staffed with 20 officers. Plans shown below include additional office space, holding cells, conference space, locker facilities, role call room, gym and polygraph room.



**Police Department
Renovations
Cheshire, CT**

(55 officers; pop. 29,261)

Ensured the integrity of items and documents housed in the department's evidence room.



**Police Department Expansion & Modernization
Southbury, CT**

(21 officers; pop. 19,904)

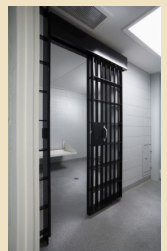
The 5,000 s.f., two-story facility was totally renovated and modernized, evaluating staff and public use, multi-purpose functions and needs, security and detainee functions, space acoustics, adjacencies and compatibilities, parking, pedestrian and vehicular access.



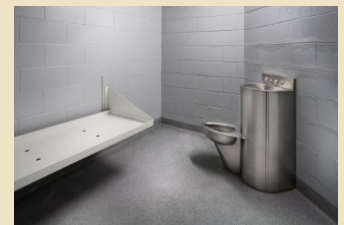
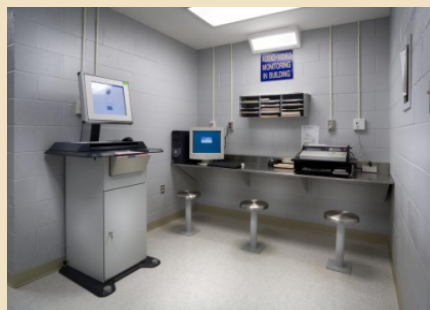
The entrance on the south side of the facility was upgraded both for aesthetics and accessibility.



Spaces were reorganized separating public access areas from those of the police staff, detainees and their attorneys and family.



The cells were upgraded with new fronts, cots, vandal proof toilet and light fixtures and redundant surveillance systems to curtail damage and injury.



The Dispatch and records offices were positioned to be visually linked to the main entrance and public lobby on the first floor while enhancing security for the staff.





Police Headquarters, West Haven, CT
(80 officers; pop. 54,516)

M/E/P/FP engineering services were provided for this new 55,000 s.f. facility. Plumbing throughout the cell blocks is configured to allow officers the ability to shut off water and flush toilets from their station outside the lockup. HVAC systems included specialty cell fixtures and an extensive exhaust system for the firing range.



**Police Department Expansion
North Branford, CT**
(23 officers; pop. 14,407)

First expanded by S/P+A in 1992, we were reselected in 2017 for another department expansion

A new floor plan reflects a proposed solution to meet the department's needs.



**Radio Tower & Support Facility
East Haddam, CT**

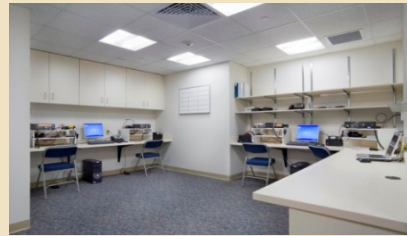
Provides the Town, CT DOT, and CT DESPP with public safety radio coverage in a highly remote area.



**Emergency Operations Center
Manchester, CT**

(113 officers; pop. 58,241)

Manchester's new Emergency Operations Center comprises 5,000 s.f. on the second floor of the Town's Public Works building. The Center serves as a regional planning and communications hub during damaging storms and other widespread emergencies.



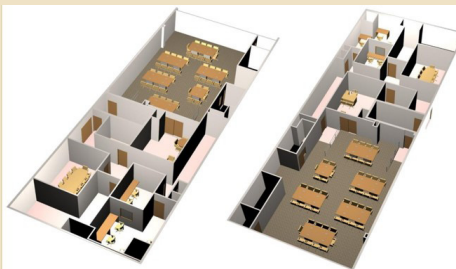
The facility design included communications equipment and meeting rooms where representatives of police, emergency medical services and fire departments from throughout the region could gather and direct services. State of the art audio/video systems were designed with spaces to house

a command office, fire and radio dispatch, and HAM radio. The center is also used for training personnel in a regional disaster response.

The mechanical system was divided into zones for maximum energy efficiency and the lighting design is based on LEED standards.

The center was funded in part by a U.S. Department of Justice grant, a grant from the Capitol Region Council of Governments and from CT's homeland security program.

Below is a rendering of the project prior to construction.

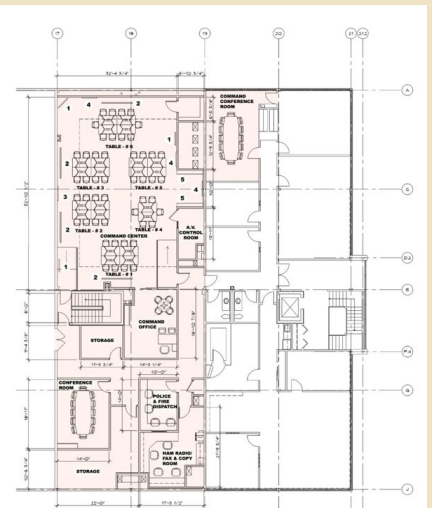


PERSPECTIVE VIEW 1
PERSPECTIVE VIEW 2

- COMMAND CENTER
LEGEND**
- ① WALL MOUNT 42" LCD (3)
 - ② 100" CEILING MOUNT SCREEN (4)
 - ③ 48" SMART BOARD (1)
 - ④ 48" DRY ERASE BOARD (4)
 - ⑤ BOOK SHELF (2)
- TABLES**
- 1. OPERATIONS
 - 2. COMMAND
 - 3. PLANNING
 - 4. FINANCES
 - 5. LOGISTICS
 - 6. NGOs & LT.



INTERIOR VIEW



FLOOR PLAN



Dean A. Petrucci, AIA
*Principal &
Vice President*

David J. Stein, AIA
*Principal &
Project Manager*

Robert R. Banning, P.E.
*Principal &
Chief Electrical Engineer*

William R. Silver, AIA
*Principal &
President*

**Kenneth J. Sgorbati, P.E.,
LEED AP**
*Principal &
Engineering Manager*

Professional Registrations

- ▶ Architect: CT
- ▶ Interior Designer: CT

Education

- ▶ B.S. Architectural Engineering Technology, NY Institute of Technology
- ▶ A.S. Architectural Engineering, Norwalk State Technical College

Professional Registrations

- ▶ Architect: CT, VT, NY
- ▶ Interior Designer: CT

Education

- ▶ B. Arch., Pratt Institute
- ▶ A.S. Architectural Engineering, Norwalk State Technical College
- ▶ Summer Program, Rhode Island School of Design
- ▶ Design Certificate, University of Copenhagen

Professional Registrations

- ▶ Engineer: CT, MA

Education

- ▶ B.S. Electrical Engineering, University of Connecticut
- ▶ A.S. Nuclear Technology, Thames Valley Technical College

Professional Registrations

- ▶ Architect: CT, NY, RI, MA, MD, NH, NJ, ME, PA
- ▶ Interior Designer: CT
- ▶ Historical Architect: CT State Historic Commission

Education

- ▶ M. Arch., Rensselaer Polytechnic Institute
- ▶ Certificate, Architectural Association, London, England
- ▶ B. Environmental Design, Miami University (Ohio)

Professional Registrations

- ▶ Engineer: CT, NY, MA, RI, NJ, PA, DE, MD, VA, OH, FL, ME, NH, VT

Education

- ▶ B.S. Mechanical Engineering, University of Connecticut (Pi Tau Sigma Honor Fraternity)
- ▶ The Hartford Graduate Center, Courses in Engineering
- ▶ Professional seminars offered by ASHRAE, NFPA and ASPE

