

PUBLIC WORKS
FACILITY
DESIGN & PLANNING



SILVER/PETRUCELLI+ASSOCIATES
Architects / Engineers / Interior Designers

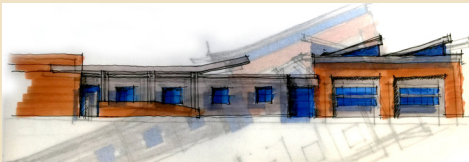
3190 Whitney Avenue | Hamden CT 06518
203.230.9007 | silverpetrucelli.com
info@silverpetrucelli.com



SILVER/PETRUCELLI+ASSOCIATES
Architects / Engineers / Interior Designers

Multi-disciplined Staff. Our in-house staff of 50 includes architects, mechanical/electrical engineers, interior designers, code consultants, spec writers and construction administrators.

Programming. Many municipal facilities are decades old and inadequate for today's modern equipment, maintenance requirements, space and staff needs. Programming the needs of highway, sewer and public works departments is the most important step in the design process.



Where to build. Whether a current site or potential site can accommodate a facility today . . . and for the next 20 years requires detailed evaluations of site development restrictions, utility locations and environmental impacts to ensure reliable access to the communities served.

Design. Having planned, designed and constructed 40+ facilities we understand a well-designed yard enhances workflow, decreases response time during emergencies, and increases safety. Work zones, storage areas, and vehicle circulation are critical components to facility design.



Special structures such as salt and sand storage, vehicle wash bays, and fueling stations also need to be incorporated.

Engineering. Our in-house engineers address the unique needs of public works facilities such as carbon monoxide sensing and evacuation systems, generators, air and fluid supply systems, and more.



Darien, CT
Population 20,732
(currently under construction)

Goal: Expand the highway garage to accommodate the increased need for equipment and staff.

A feasibility study evaluated the existing structure and systems and a new addition expanded the footprint to accommodate the different departments' needs to include:

- Full size truck wash by (drive thru & fully enclosed)
- Truck storage bay/mechanic's bay
- Storage areas
- Bunk/break/meeting rooms
- Mechanical room
- Oil/water separator
- Tool storage
- Expanded offices



In addition to renovations to existing areas, the design includes a new fueling station with canopy, new mechanical and ventilation systems, roof solar panels, and security features including card readers and intrusion detection.



Wallingford, CT
Population 46,000

Goal: Replace and expand the Town's truck storage, maintenance building and staff offices.

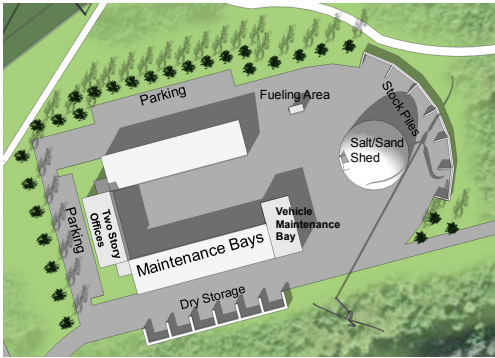
The Wallingford Electric Division is a municipally-owned electric distribution utility serving customers in Wallingford, Northford and North Branford.

The existing line truck storage shed was a pre-fabricated metal building that was originally constructed in 1983 as an open 10-bay shed to provide covered parking for passenger cars, pick-up trucks and other equipment. In 1981, the shed was modified to eight bays to provide secure storage for line trucks.



Comprehensive programming and design services were provided to replace the shed with a larger and improved building that includes 10 bays, office space, lockers and restrooms, a training room, tool storage/testing space, and wash down bay with gear wash area.





Branford, CT
Population 29,000

Goal: A study was needed to determine the feasibility of keeping the public works department at its current location or moving it elsewhere.

The location was evaluated against other sites around town. An objective matrix ranked the pros and cons of qualitative and quantitative elements, assisting the building committee in determining the best location for the next 20 years.

Conceptual designs for a new 25,000 s.f. facility included service bays with heavy lift capacity for fire apparatus both from Branford and surrounding towns as a revenue generator for the Town. New offices with modernized storage and material stockpile areas were a part of the programming requirements.



Cromwell, CT
Population 14,005

Goal: Combine the departments of Public Works, Vehicle Maintenance and the Town Sewer Garage into a single facility.

Programming needs were evaluated which included:

- Storage bays
- Maintenance bays
- Vehicle wash facilities
- Office space
- Staff areas
- Salt and fuel storage areas
- Equipment needs
- Site circulation and parking

Evaluation Criteria	
Criteria	
1	Site Acquisition Cost / Value
2	Site Development Cost
3	Site Size
4	Site Location and Accessibility
5	Vehicular Access & Parking
6	Neighborhood Impact & Aesthetics
7	Public Utility Availability
8	Zoning Restrictions and Variances
9	Open 'Green' Space
10	Environmental & Wetlands Impact
11	Building Construction Costs
12	Potential Site Contamination
13	Building Demolition Costs
14	Future Expansion Opportunities
TOTAL SCORE (Max-320.4)	

The Town identified eleven (11) properties for the new facility. All 11 sites were analyzed against the programming needs and preliminary site, building designs and estimates were developed for the Town's consideration.



Canton, CT
Population 21,561

Goal: Build a new highway garage facility for the Department of Public Works.

Three sites were identified and qualitative and quantitative analyses of each site was completed.

Space and programmatic needs were evaluated against site conditions and land use restrictions to choose the best site for the facility.

Preliminary conceptual designs and cost estimates were developed and presented in community meetings and at referendum.



OTHER PUBLIC WORKS EXPERIENCE

Maintenance/Transit Facilities

- Landfill Scalehouse, Manchester (*pictured*)
- Greater New Haven Transit District Site Selection & Design, New Haven
- Public Works Storage & Maintenance Building, Glastonbury
- The Orchard's Golf Course Maintenance Building, Milford
- USPS Vehicle Maintenance Facility, New Haven



Public Park Structures & Facilities

- Pleasure Beach Park, Bridgeport (*pictured*)
- Alling Memorial Golf Course Clubhouse, New Haven
- Ellsworth Park Comfort Station, Bridgeport
- Orange Avenue SportsPark Concession, Milford
- Ballantine Park Pool House, Southbury



Animal Shelter and Control Facilities

- Animal Respite Center, Stratford (*pictured*)
- New Haven Animal Shelter
- Woodbridge Animal Shelter
- Ansonia Animal Shelter
- COGNV Regional Animal Shelter





Dean A. Petrucci, AIA
*Principal &
Vice President*

David J. Stein, AIA
*Principal &
Project Manager*

Robert R. Banning, P.E.
*Principal &
Chief Electrical Engineer*

William R. Silver, AIA
*Principal &
President*

**Kenneth J. Sgorbati, P.E.,
LEED AP**
*Principal &
Engineering Manager*

Professional Registrations

- ▶ Architect: CT
- ▶ Interior Designer: CT

Education

- ▶ B.S. Architectural Engineering Technology, NY Institute of Technology
- ▶ A.S. Architectural Engineering, Norwalk State Technical College

Professional Registrations

- ▶ Architect: CT, VT, NY
- ▶ Interior Designer: CT

Education

- ▶ B. Arch., Pratt Institute
- ▶ A.S. Architectural Engineering, Norwalk State Technical College
- ▶ Summer Program, Rhode Island School of Design
- ▶ Design Certificate, University of Copenhagen

Professional Registrations

- ▶ Engineer: CT, MA

Education

- ▶ B.S. Electrical Engineering, University of Connecticut
- ▶ A.S. Nuclear Technology, Thames Valley Technical College

Professional Registrations

- ▶ Architect: CT, NY, RI, MA, MD, NH, NJ, ME, PA
- ▶ Interior Designer: CT
- ▶ Historical Architect: CT State Historic Commission

Education

- ▶ M. Arch., Rensselaer Polytechnic Institute
- ▶ Certificate, Architectural Association, London, England
- ▶ B. Environmental Design, Miami University (Ohio)

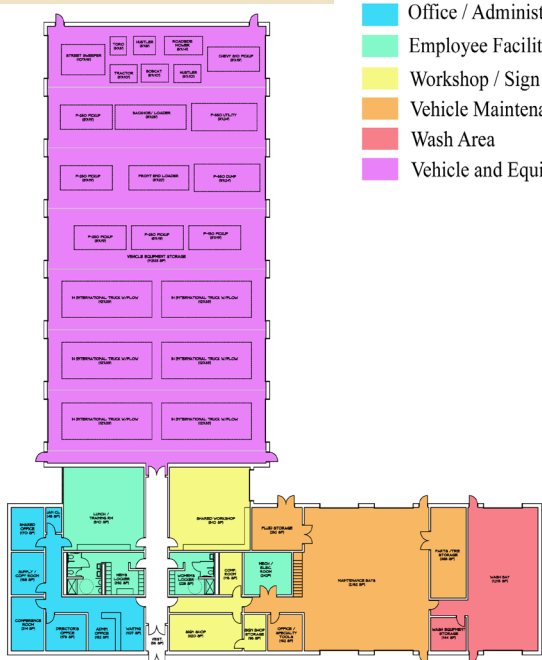
Professional Registrations

- ▶ Engineer: CT, NY, MA, RI, NJ, PA, DE, MD, VA, OH, FL, ME, NH, VT

Education

- ▶ B.S. Mechanical Engineering, University of Connecticut (Pi Tau Sigma Honor Fraternity)
- ▶ The Hartford Graduate Center, Courses in Engineering
- ▶ Professional seminars offered by ASHRAE, NFPA and ASPE

Sample Floor Plans & Design Concepts



- Office / Administration Area
- Employee Facilities
- Workshop / Sign Shop
- Vehicle Maintenance
- Wash Area
- Vehicle and Equipment Storage

