

SCHOOL SECURITY
INFRASTRUCTURE
IMPROVEMENTS



SILVER/PETRUCELLI+ASSOCIATES
Architects / Engineers / Interior Designers

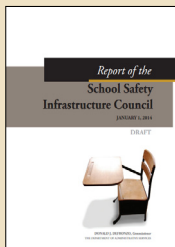
3190 Whitney Avenue | Hamden CT 06518
203.230.9007 | silverpetrucelli.com
info@silverpetrucelli.com



Following so many school tragedies, and with the assistance of state funding programs, many school districts are looking for ways to incorporate more effective security measures as they build, renovate or expand their educational facilities.

To design schools that are both safe and appealing, we apply the Crime Prevention Through Environmental Design (CPTED) standards to deter criminal behavior through building design. CPTED Standards have many benefits - they improve school operations and control over the school environment, enhance law enforcement's efforts towards monitoring the facility, create a positive learning environment for students, and provide simple, cost effective solutions through an integrated design process

The CPTED recommendations are supported by the State of CT *School Safety Infrastructure Council* (SSIC) guidelines which dictate school safety infrastructure standards. Design considerations include:

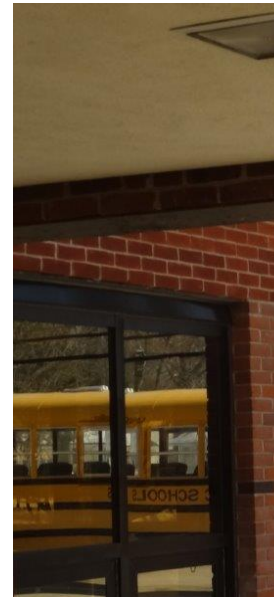


Safer Buildings

- ▶ Locking barriers between classrooms & facilities such as the gym.
- ▶ Skylights, clerestories, and other windows that can't be easily reached.
- ▶ Use of window glazing/films.
- ▶ Clearing corridors of obstructions & hidden alcoves.
- ▶ Creating large, wide hallways & common areas.
- ▶ Installing student lockers in classrooms instead of hallways.
- ▶ Single-stall bathrooms and/or maze entrances in toilet rooms.
- ▶ Limiting roof, hatch & ladder access.

Safer Doorways

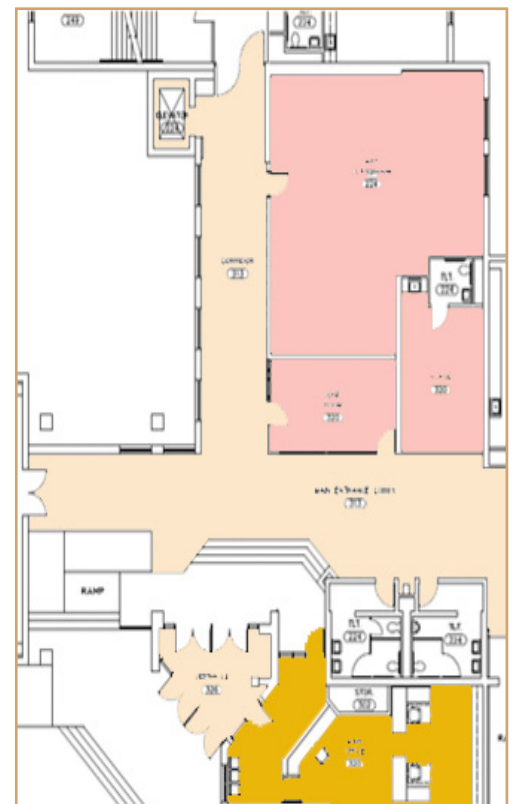
- ▶ Fewer entrances & more mantraps.
- ▶ Locating offices at the front of the school.
- ▶ Separate, controlled entrances for staff.



Designs for Berlin High School, West Shore Middle School in Milford and Long Hill School in Shelton featured vestibule systems, door fortification, ballistic glass and integrated electronic security features and systems.



Melissa Jones School Before



Melissa Jones School After

In an effort to make their schools safer, the Town of Guilford made security improvements to four of its schools. The goal of the project was to make the main entrances more openly accessible, to enhance the line of sight from the main office and to force a redirection of visitor traffic. Our *Before* and *After* solutions for Melissa Jones School, above, included swapping spaces to reorient the line of sight and included automatic door locking mechanisms to increase safety.



Dean A. Petrucelli, AIA
*Principal &
Vice President*

David J. Stein, AIA
*Principal &
Project Manager*

Robert R. Banning, P.E.
*Principal &
Chief Electrical Engineer*

William R. Silver, AIA
*Principal &
President*

**Kenneth J. Sgorbati, P.E.,
LEED AP**
*Principal &
Engineering Manager*

Professional Registrations

- ▶ Architect: CT
- ▶ Interior Designer: CT

Education

- ▶ B.S. Architectural Engineering Technology, NY Institute of Technology
- ▶ A.S. Architectural Engineering, Norwalk State Technical College

Professional Registrations

- ▶ Architect: CT, VT, NY
- ▶ Interior Designer: CT

Education

- ▶ B. Arch., Pratt Institute
- ▶ A.S. Architectural Engineering, Norwalk State Technical College
- ▶ Summer Program, Rhode Island School of Design
- ▶ Design Certificate, University of Copenhagen

Professional Registrations

- ▶ Engineer: CT, MA

Education

- ▶ B.S. Electrical Engineering, University of Connecticut
- ▶ A.S. Nuclear Technology, Thames Valley Technical College

Professional Registrations

- ▶ Architect: CT, NY, RI, MA, MD, NH, NJ, ME, PA
- ▶ Interior Designer: CT
- ▶ Historical Architect: CT State Historic Commission

Education

- ▶ M. Arch., Rensselaer Polytechnic Institute
- ▶ Certificate, Architectural Association, London, England
- ▶ B. Environmental Design, Miami University (Ohio)

Professional Registrations

- ▶ Engineer: CT, NY, MA, RI, NJ, PA, DE, MD, VA, OH, FL, ME, NH, VT

Education

- ▶ B.S. Mechanical Engineering, University of Connecticut (Pi Tau Sigma Honor Fraternity)
- ▶ The Hartford Graduate Center, Courses in Engineering
- ▶ Professional seminars offered by ASHRAE, NFPA and ASPE



Architects | Draftsmen | Mechanical Engineers | Electrical Engineers | Electrical Designers | Plumbing/Fire Protection Engineers
Interior Designers | Construction Administrators | Specifications Writer | Administrative Staff | 47 Total Staff