

SENIOR CENTER &  
COMMUNITY CENTER  
PROGRAMMING & DESIGN



SILVER/PETRUCELLI+ASSOCIATES  
*Architects / Engineers / Interior Designers*

3190 Whitney Avenue | Hamden CT 06518  
203.230.9007 | silverpetrucci.com  
info@silverpetrucci.com

*Eckersley Hall Senior/Community Center in Middletown, CT*



**Multi-disciplined staff.** The strength of the firm rests on an in-house staff of 50 talented architects, engineers, interior designers, specification writers, and construction administrators.



**Experience.** Senior/Community Center projects include:

- Rocky Hill Senior/Community Center
- Eckersley Hall Sr. Center, Middletown
- Richmond Senior Center, New Milford
- Oxford Senior Center
- Southbury Senior Center
- Newington Senior Center
- Woodmont Borough Hall, Milford
- East Side Youth/Community Center, Manchester
- Birdseye Municipal Center, Stratford
- Heritage Hills Community Center, Somers, NY

**Unique Design Considerations.** Whether it's building a new facility or bringing existing buildings into compliance for use by the senior community, there are a number of design elements to consider that support independence and engagement including:

- Interior circulation and site access
- Accessibility (multi-levels)
- Multi-purpose spaces
- Maximize natural light
- Slip and fall materials & floor patterning
- Technology access
- Flexible furniture and materials
- Recreational reading areas
- Bus and transportation
- Outdoor spaces (i.e. dining, games and gardening)

**Design Resources.** S/P+A is supported by leading edge computing and workplace technology. Advanced 3D technologies such as Revit, are fully integrated in house to enhance both design and construction.



Reading Room



Multi-purpose Room



Full Commercial Kitchen



Cafe



Small Meeting Room



Game Room

▲ **Eckersley-Hall Senior Center, Middletown, CT**  
13,000 s.f. rehabilitative reuse; historic grant assistance; \$5 Million





▲ Senior Center, Oxford, CT  
7,100 s.f.; \$2.1 Million

▲ East Side Community Ctr., Manchester, CT  
4,760 s.f. adaptive reuse; \$900,000



▲ Heritage Hills Community Ctr., Somers, NY  
12,000 s.f.

▲ Senior Center, West Hartford, CT  
7,000 s.f.; \$1.5 Million



▲ Woodmont Borough Hall, Milford, CT  
2,185 s.f. adaptive reuse; \$1 million



▲ Senior Center, Southbury, CT  
17,000 s.f. renovation/expansion; \$1.5 million



▲ Richmond Senior Center, New Milford, CT  
1,890 s.f. addition; \$545,000 (under construction)

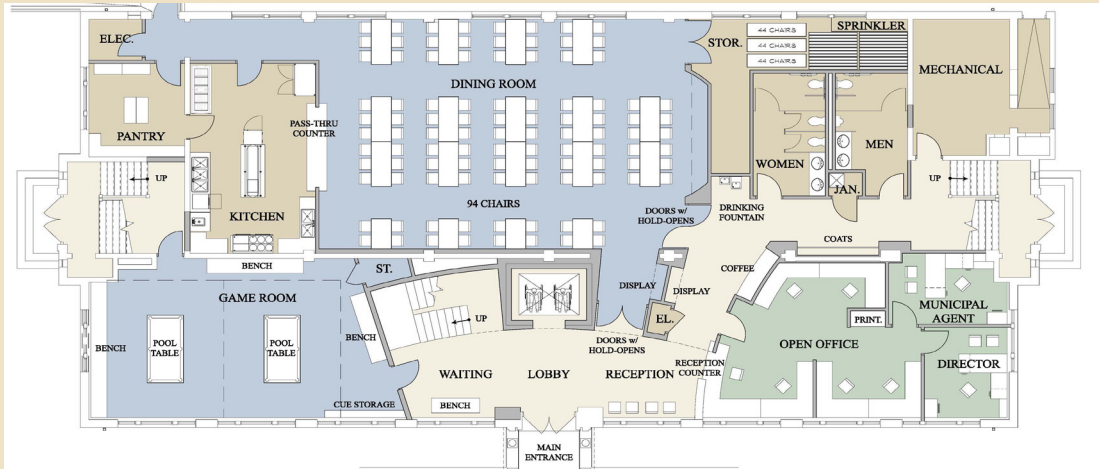




## Programming

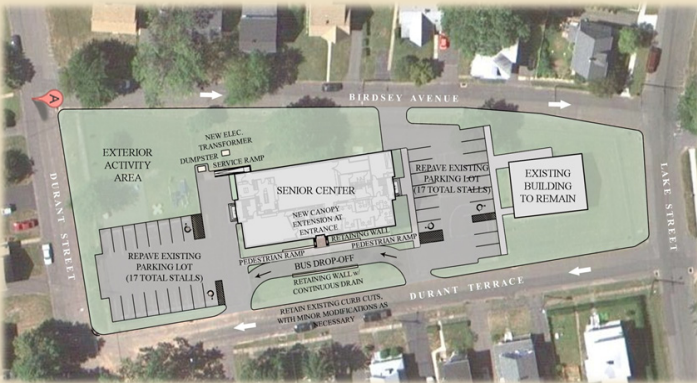
## Laying out the Program

SPACE COMPONENT	PROPOSED SQUARE FOOTAGE	
	No.	
<b>Senior Center Program</b>		
Reception Office	1	175
Administrative Office	2	175
Health Screening Room	1	200
Dining Area (75 occupants)	1	1,350
Table/Chair Storage	1	150
Multi-Purpose Activity Rooms	3	500
Meeting Room (12 occupants)	1	250
Meeting Room (25 occupants)	1	500
Socialization Area	1	400
Library / Reading Room	1	400
Pool/Game Room (2 Tables)	1	600
Arts & Crafts Room	1	600
Exercise Room & Lockers	1	400
Computer Classroom	1	200
Kitchen / Food Pantry	1	450
Men's Toilet Rooms	2	175
Women's Toilet Rooms	2	225
General Storage	1	500
Janitors' Closet	2	50
<b>Total Senior Center Space</b>		<b>8,925</b>
<b>City and Municipal Program</b>		
Police Sub-Station	1	200
Municipal Departments	1	0
<b>Total City and Municipal Space</b>		<b>200</b>
<b>Total Net square footage</b>		<b>9,125</b>
40% circulation (corridors, elevator, stairs & structure)		3,650
<b>Total Gross square footage</b>		<b>12,775</b>



## Design - Many Options Developed

## Site Planning (simultaneous with design)



## Engaging the Public - Community Support

**MIDDLETOWN SENIOR & COMMUNITY CENTER**

**MIDDLETOWN SENIOR & COMMUNITY CENTER**

**MIDDLETOWN SENIOR & COMMUNITY CENTER**

**MIDDLETOWN SENIOR & COMMUNITY CENTER**

**MIDDLETOWN SENIOR & COMMUNITY CENTER**

## What the Community Members Say

*"At the Southbury senior center, the struggle for visitors is often figuring out which activities to do: Pilates or Fit and Flex? Line dancing or tap dancing? Photos for Fun or table tennis? Five drivers deliver patrons there or to other places in town in four vehicles, including a 14-passenger van."*



*"We've seen an explosion of attendance (in Middletown) that we haven't seen in years and people just love the building, the architecture, the new furniture, the technology that we have throughout the location, the additional programming; people are excited."*

*"... the book club is just one example of the types of programs the new senior center (in Middletown) can offer because there is finally enough space to host it."*